



# Your Guide to Aged Care Seating Solutions 2023

# Aged Care

We're committed to providing the best quality seating for our aging population. Our focus goes beyond the user to the carer, ensuring our seating makes their job as easy as possible.

This brochure has been specifically designed to showcase our range and our flexibility when it comes to assisting you in finding the right seating solution for your facility. We have specialised products for many aspects of aged care including residential, respite, palliative and long-term care.

Our consultants are available every step of the way to assist you on your journey towards finding the most suitable seating for your facility. Please speak with our team if you have any questions.



## Contents

Regency™ Result3 Recliner	4
Regency™ Care Chairs - Gas Assisted	5
Regency™ Carer Chair	6
Sertain™ HILO Care Chair	7
Additional Options	9
Create Your Own Care Chair & HILO	10
Colours	11

# Regency™ Result3 Recliner



Available in gas or electric



Packed full of features and with a 200kg weight capacity, this sleek recliner boasts a modern design appealing to wards and clinics. The fixed lounge style armrest has been uniquely designed to fit right up to most dining table to increase versatility.

- Tilt in space seat and legrest action
- Euro style reclining backrest
- Elevating standard legrest
- Fixed lounge style armrest
- Incorporating pressure management Multicush gel seating and air cushion backrest system
- Footrest option

Forward transfers only

Fully layflat

Perfect for maintaining socialisation



Fits up to most tables for meal times



Gas & electric models	
SWL	200kg
Width	550mm

**"The Regency Result3 Recliner helps to keep the elderly social. It's mobile, comfortable, and able to fit right up to most meal tables in common zones. It's the ability to lay the chair flat which is a favourite feature of nursing home staff."**

# Regency™ Care Chairs - Gas Assisted

## Regency Care Chair

SWL  
180kg



Both chairs  
nurse/carer  
operated

Range of  
movement

## Regency Carer Chair

SWL  
200kg



**Product Code**  
R2900D-9074

- 2 position swing away armrest and headwings - non removable
- 1 piece seat, back and legrest - with break at the knee and convoluted seat and back
- Seat width: 460mm
- Seat height to floor: 520mm

**Product Code**  
R3940D.S.NT.A-9074

### Both chairs include

- Pressure care management gel seating and air cushion backrest
- Complete layflat position
- Deluxe legrest including fold-away footplate

- 2 position swing away removable armrest and headwings - made easy for side transfers and cleaning
- 1 piece seat, back and legrest with smooth profile to assist with patient comfort and infection control/cleaning
- Seat width: 520mm
- Seat height to floor: 550mm

# Regency™ Carer Chair

Our Regency Carer Chair makes side transfers simple with completely removable armrests. Packed full of features and functions, this care chair is ready to be customised to suit your caring needs. Specially designed for you to choose from four backrests, five armrests and two leg-rest options. It's available in three sizes and also in gas-assisted form.

- Electric 3 function (backrest, seat-tilt & leg-rest)
- Auto layflat and auto chair function
- Multicush pressure management gel seating
- 2 position swing away head wings
- 2 position removable armrests
- 150mm tracking/braking castors

Nurse or patient controlled

Available in 3 sizes

Side & forward transfers



Scan to view the range:

	Standard	Large	Extra large
SWL	200kg	300kg	350kg
Width	520mm	620mm	720mm

Oxy Bottle and IV Kit Option



Regency™ Carer Chair- Gas Assisted option also available



# Sertain™ HILO Care Chair



Versatile in design and function, our Sertain HILO Care Chair is a popular choice for many wards including intensive care units. The HILO function of the chair is a nurse's dream - allowing you to adjust the height of the chair to a position comfortable to assist the patient.

- Electric 4 function (backrest, seat-tilt & leg-rest)
- Auto lay flat and auto chair function
- 2 position swing-away head wings
- 2 position removable armrests
- Standard removable armrests with no meal tray provision
- Deluxe legrest including a fold-away footplate
- Multicush pressure management seating system
- Hi-Low range: 550-850mmH

Flexible in design

Available in 3 sizes

HILO function assisting delivery of care & cannulation



	Standard	Large	Extra large
SWL	160kg	300kg	350kg
Width	520mm	620mm	720mm



**"The Sertain chair helps us get a greater variety of critical care patients out of bed, with less resource. Ultimately, this leads to shorter stay in ITU."**

- Critical Care Physio, London

# Additional options

## Comflex Bahama Recliner



Fits under most tables for meal times

- 180kg SWL
- Available in gas or electric
- 'Tilt in space' seat and legrest action
- Euro style reclining backrest
- In-built headrest for style and comfort
- Available in two sizes

Product code: CRS-D-BM

## Comflex Mayfair Recliner



Comfortable and mobile

- 120kg or 140kg SWL
- One piece backrest for easy clean and infection control
- Anti-sag spring seat
- Flush trigger pull operation

Product code: Mayfair

## Regency Result3 Recliner



Aesthetic and functional

- 200kg SWL
- Electric 'tilt-in-space seat
- Fixed Vienna armrests
- Auto layflat and auto chair function

Product code: RR3245S

## Comflex Windsor Medical Recliner



Ideal for rehabilitation

- 120kg SWL
- Available in gas or electric
- Solid Tasmanian Oak frame
- Unique design to limit tipping
- One piece backrest for easy-clean and anti-tipping

Product code: Comflex Windsor Medical



# Care Chair + HILO

At Careleda, we're passionate about ensuring that our products are specially tailored to meet the need of each individual and carer. That's why we've built a chair with parts that can be selected to give you the most out of your seating.

Care chair + HILO



# CREATE YOUR CARE CHAIR + HILO

## BACKREST STYLES



40 Standard Series (with wings)



40 Standard Series (without wings)



45 Euro Series



50 Bahama Series

## ARMREST STYLES

(all removable)



No Meal Tray Arm



Standard Removable Arm



Drop Arm



Procedure Arm



Procedure Tray Arm

## LEGREST OPTIONS



Standard Legrest (No Footplate)



Deluxe Legrest (With Fold-Away Footplate)

## BASE DESIGN



Standard Base



Central Lock Base

## ACCESSORIES



IV Pole



Oxygen Bottle Carrier



CPR Layflat Bar

Available in

- ✓ Gas
- ✓ Electric
- ✓ HILO

Sizes

- ✓ Standard
- ✓ Large
- ✓ Extra Large

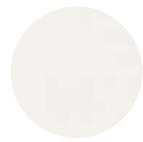


# Colour Options

## Studio Encore Range



Snow



Cococnut



Chalk



Almond



Nougat



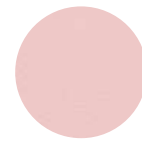
Tobacco



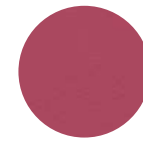
Clay



Sand



Mink



Lipstick



Primrose



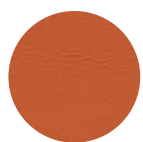
Paprika



Flame



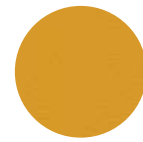
Cameo



Tangerine



Sorbet



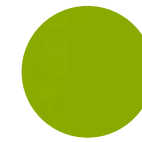
Carnival



Lemon  
Twist



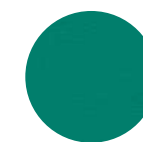
Citronelle



Lime



Grasshopper



Emerald



Cactus



Caribbean



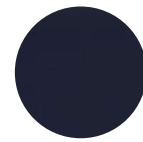
Seagrass



Forest



Black



Navy



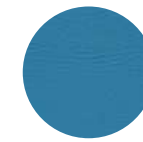
Windsor



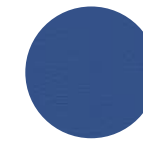
Steel



Iceberg



Lagoon



Galaxy



Periwinkle



Atlantic



Wedgewood



Charcoal



Pewter



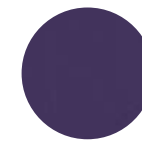
Smoke



Shell



Lilac



Regal



Plum



Eggplant



Port



Ruby



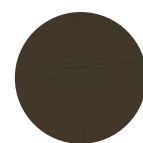
Rhubarb



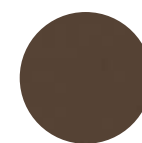
Coffee  
Bean



Bark



Brazil

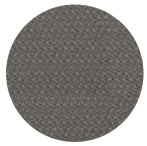


Maple

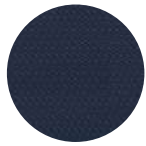


Cedar

## Juno Range



Juno  
Flake

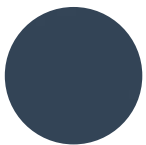


Juno  
Cornflower

## Polysoft Range



Grey



Night Blue



Navy

## Some Recent Choices



Regency Result3 Recliner  
Pictured in Tangerine



Certain HILO Care Chair  
Pictured in Polysoft Grey & Grasshopper




Regency Result3 Recliner  
Pictured in Citronelle



Regency Result3 Recliner  
Pictured in Lilac

Note: The colours shown here may not be a true representation of the actual product and must be viewed as a guide only.  
As with all upholstery some designs and colours can be discontinued by suppliers without notice.



...when we make an emotional and physical improvement to those that need care, the carer, the family, the friends and support persons we have achieved our goal!



## CONTACT US

18 Walker Street, South Windsor NSW 2756

1800 044 012

1300 857 233

[sales@careleda.com](mailto:sales@careleda.com)

[www.careleda.com](http://www.careleda.com)