



Acute Care Seating | 2023

Acute Care

At Careleda, we see our role as far more than delivering high-quality seating solutions. Our goal is to not only improve the quality of life for patients, but also assist each carer and facility in achieving an efficient work environment and great patient results.

This brochure has been specifically designed to showcase our range and our flexibility when it comes to assisting you in finding the right seating solution for your facility.

Our consultants are available every step of the way. Please speak with our team if you have any questions.





Contents

Regency™ Result3 Recliner	4
Sertain™ HILO Care Chair	5
Regency™ Carer Chair	7
Create Your Own Care Chair & HILO	8
Additional Options	9
Colours	10

Regency™ Result3 Recliner



Available
in gas or
electric



Packed full of features and with a 200kg weight capacity, this sleek recliner boasts a modern design appealing to wards and clinics. The fixed lounge style armrest has been uniquely designed to fit right up to most dining table to increase versatility.

- Tilt in space seat and legrest action
- Euro style reclining backrest
- Elevating standard legrest
- Fixed lounge style armrest
- Incorporating pressure management Multicush gel seating and air cushion backrest system
- Footrest option

Forward
transfers only

Fully layflat

Perfect for
maintaining
socialisation



Gas & electric models	
SWL	200kg
Width	550mm

"The Regency chairs allow patients to rest and elevate limbs after they have been assessed as well as laying flat if needed. They are also very easy to clean, so as to maintain good infection control."

- Facility Clinic

Sertain™ HILO Care Chair

SERTAIN
... A Team Player!



Versatile in design and function, our Sertain HILO Care Chair is a popular choice for many wards including intensive care units. The HILO function of the chair is a nurse's dream - allowing you to adjust the height of the chair to a position comfortable to assist the patient.

- Electric 4 function (backrest, seat-tilt & leg-rest)
- Auto lay flat and auto chair function
- 2 position swing-away head wings
- 2 position removable armrests
- Standard removable armrests with no meal tray provision
- Deluxe legrest including a fold-away footplate
- Multicush pressure management seating system
- Hi-Low range: 550-850mmH

Flexible in design

Available in 3 sizes

HILO function assisting delivery of care & cannulation



Scan to view the range:

	Standard	Large	Extra large
SWL	160kg	300kg	350kg
Width	520mm	620mm	720mm



"The Sertain chair helps us get a greater variety of critical care patients out of bed, with less resource. Ultimately, this leads to shorter stay in ITU."

- Critical Care Physio, London



Regency™ Result3 Recliner - RR3245S.3E



Regency™ Result3 Recliner - RR3245S.3E-V



Sertain™ HILO Care Chair with Drop Arm - S4545S.S.DA



Procedure Tray Arm



Standard, Large and Extra Large Sizing

Regency™ Carer Chair

Our Regency Carer Chair makes side transfers simple with completely removable armrests. Packed full of features and functions, this care chair is ready to be customised to suit your caring needs. Specially designed for you to choose from four backrests, five armrests and two leg-rest options. It's available in three sizes and also in gas-assisted form.

- Electric 3 function (backrest, seat-tilt & leg-rest)
- Auto layflat and auto chair function
- Multicush pressure management gel seating
- 2 position swing away head wings
- 2 position removable armrests
- 150mm tracking/braking castors

Nurse or patient controlled

Available in 3 sizes

Side & forward transfers



Scan to view the range:

	Standard	Large	Extra large
SWL	200kg	300kg	350kg
Width	520mm	620mm	720mm

Regency™ Carer Chair- Gas Assisted option also available



Oxy Bottle and IV Kit Option



Care Chair + HILO

At Careleda, we're passionate about ensuring that our products are specially tailored to meet the need of each individual and carer. That's why we've built a chair with parts that can be selected to give you the most out of your seating.

Care chair
+ HILO



CREATE YOUR CARE CHAIR + HILO

BACKREST STYLES



40 Standard Series
(with wings)



40 Standard Series
(without wings)



45 Euro Series



50 Bahama Series

ARMREST STYLES

(all removable)



No Meal
Tray Arm



Standard
Removable Arm



Drop Arm



Procedure
Arm



Procedure
Tray Arm

LEGREST OPTIONS



Standard Legrest
(No Footplate)



Deluxe Legrest
(With Fold-Away Footplate)

BASE DESIGN



Standard Base



Central Lock Base

ACCESSORIES



IV Pole



Oxygen
Bottle Carrier



CPR Layflat Bar

Available in

- ✓ Gas
- ✓ Electric
- ✓ HILO

Sizes

- ✓ Standard
- ✓ Large
- ✓ Extra Large



Additional options

Comflex Bahama Recliner



Fits under most tables for meal times

- 180kg SWL
- Available in gas or electric
- 'Tilt in space' seat and legrest action
- Euro style reclining backrest
- In-built headrest for style and comfort
- Available in two sizes

Product code: CRS-D-BM

Comflex Mayfair Recliner



Popular for maternity and NICU

- 120kg or 140kg SWL
- One piece backrest for easy clean and infection control
- Anti-sag spring seat
- Flush trigger pull operation

Product code: Mayfair

Regency Result3 Recliner



Aesthetic and functional

- 200kg SWL
- Electric 'tilt-in-space seat
- Fixed Vienna armrests
- Auto layflat and auto chair function

Product code: RR3245S

Comflex Windsor Medical Recliner



Ideal for rehabilitation

- 120kg SWL
- Available in gas or electric
- Solid Tasmanian Oak frame
- Unique design to limit tipping
- One piece backrest for easy-clean and anti-tipping

Product code: Comflex Windsor Medical

Colour Options

Studio Encore Range



Snow



Cococnut



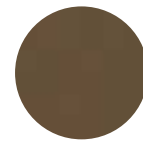
Chalk



Almond



Nougat



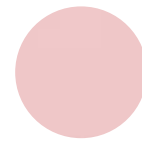
Tobacco



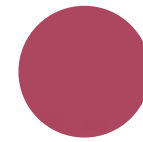
Clay



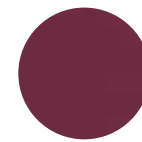
Sand



Mink



Lipstick



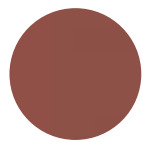
Primrose



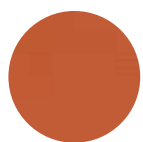
Paprika



Flame



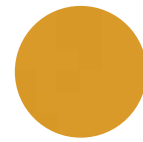
Cameo



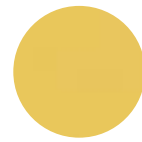
Tangerine



Sorbet



Carnival



Lemon
Twist



Citronelle



Lime



Grasshopper



Emerald



Cactus



Caribbean



Seagrass



Forest



Black



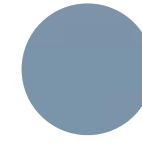
Navy



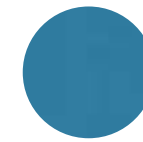
Windsor



Steel



Iceberg



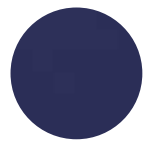
Lagoon



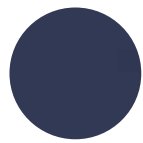
Galaxy



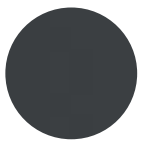
Periwinkle



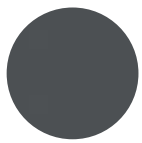
Atlantic



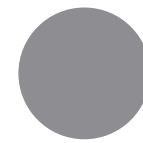
Wedgewood



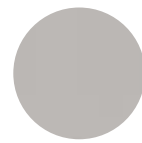
Charcoal



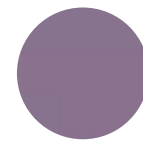
Pewter



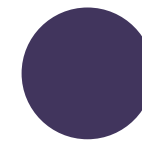
Smoke



Shell



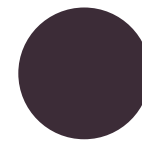
Lilac



Regal



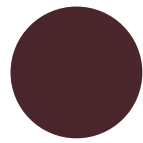
Plum



Eggplant



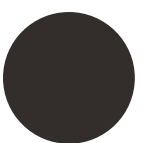
Port



Ruby



Rhubarb



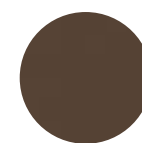
Coffee
Bean



Bark



Brazil



Maple



Cedar

Juno Range



Juno
Flake



Juno
Cornflower

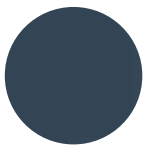


Juno
Rosehip

Polysoft Range



Grey



Night Blue



Navy

Some Recent Choices



Regency Result3 Recliner
Pictured in Tangerine



Certain HILO Care Chair
Pictured in Polysoft Grey & Grasshopper



Regency Result3 Recliner
Pictured in Citronelle



Regency Result3 Recliner
Pictured in Lilac

Note: The colours shown here may not be a true representation of the actual product and must be viewed as a guide only.
As with all upholstery some designs and colours can be discontinued by suppliers without notice.



...when we make an emotional and physical improvement to those that need Care, the Carer, the Family, the Friends and Support Persons we have achieved our goal!



CONTACT US

18 Walker Street, South Windsor NSW 2756

1800 044 012

1300 857 233

sales@careleda.com

www.careleda.com